

# Webinar:

## eSIM IoT activation: reliable and secure global connectivity



IOT ANALYTICS



We'll be starting soon, but in the meantime, let us and your network know you're here.



@Kigen



@Kigen\_Ltd



Use the chat panel for questions

The background of the slide is a vertical strip on the left side, featuring abstract, glowing red and blue light trails that resemble fiber optic connections or data paths. These trails are set against a dark background with a faint, glowing blue globe or planet visible in the lower right portion of the strip.

# Today's agenda

- Introductions
- Market trends on IoT modules and eSIM growth
- eSIM Remote SIM Provisioning: towards IoT eSIM
- Securing in-factory: provisioning for manufacturers
- Reliable, global connectivity: what to know
- Discussion with your questions!



# Meet the panel



**Bee Hayes Thakore**  
VP Marketing - Kigen



**Satyajit Sinha**  
Principal Analyst - IoT  
Analytics



**Loic Bonvarlet**  
SVP Solutions &  
Marketing - Kigen



**Jan Sulaiman**  
VP Global IoT Solutions -  
1NCE

# About IoT Analytics



## IOT ANALYTICS

We help companies understand the market dynamics for IoT, AI, Cloud, Edge, and Industry 4.0



### 1 Reports

- Market reports
- End-user/adoption reports
- Databases / Sizing & Forecasts
- ...



### 2 Dashboards & Trackers

- Global Enterprise Spending
- Connectivity & LPWA Market
- Module & Chipset Market
- ...



### 3 Research Services

- Bespoke Research
- Go-to-market strategies
- Consulting
- ...



**AVERAGE CUSTOMER SATISFACTION SCORE: 4.4/5**

**CUSTOMERS THAT WOULD RECOMMEND US: 100%**

Customer Satisfaction Survey 2020

# What customers say about us

General feedback and references

## Selected customers



## Quotes

“We engaged IoT Analytics to perform digital ecosystem and competitive intelligence gathering and were very pleased with their depth of understanding of the Industrial Internet of Things. Their team worked with us in a highly collaborative manner and delivered a series of reports that were greatly appreciated by the digital leadership team and other key stakeholders in Marketing & Sales. I’d recommend this boutique firm without reservation.”

*Kathleen Conroy, Group Vice President at ABB*

What I enjoy most is that IoT Analytics often conducts in-depth analysis of IoT from both technical and industry dimensions, especially in certain perspectives where some of the analytical angles are precise and profound. I think IoT Analytics’ analysts have a very deep industrial understanding, which leads all of us to rethink.

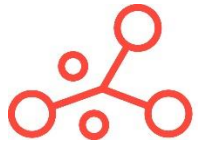
*Zhen Guan, Senior Partner Technology Strategist, Microsoft*

“I find it really impressive how the IoT Analytics team have built up a broad and proprietary knowledge base around the Internet of Things and Industrie 4.0 ecosystems.”

*Markus Lorenz, Partner and Managing Director at The Boston Consulting Group*

“My experience working with the team of experts at IoT Analytics has been enjoyable and enlightening. The work was delivered on time, on budget, and beyond our expectations.”

*Jake White, VP Marketing at MyDevices IoT platform*



IOT ANALYTICS

## Global IoT eSIM Modules and iSIM Chipsets Market Tracker

A purpose-built tool to slice and dice market data for IoT eSIM, iSIM, uSIM modules and chipsets.

REQUEST A FREE DEMO

TRY THE TOOL NOW

## Global Cellular IoT Connectivity Tracker & Forecast (2024 Update)

A purpose-built tool to slice and dice market data for cellular IoT connectivity

BUY NOW

TRY THE TOOL NOW



**Satyajit Sinha**

*Principal Analyst*

*“IoT Component, Connectivity & Security”*

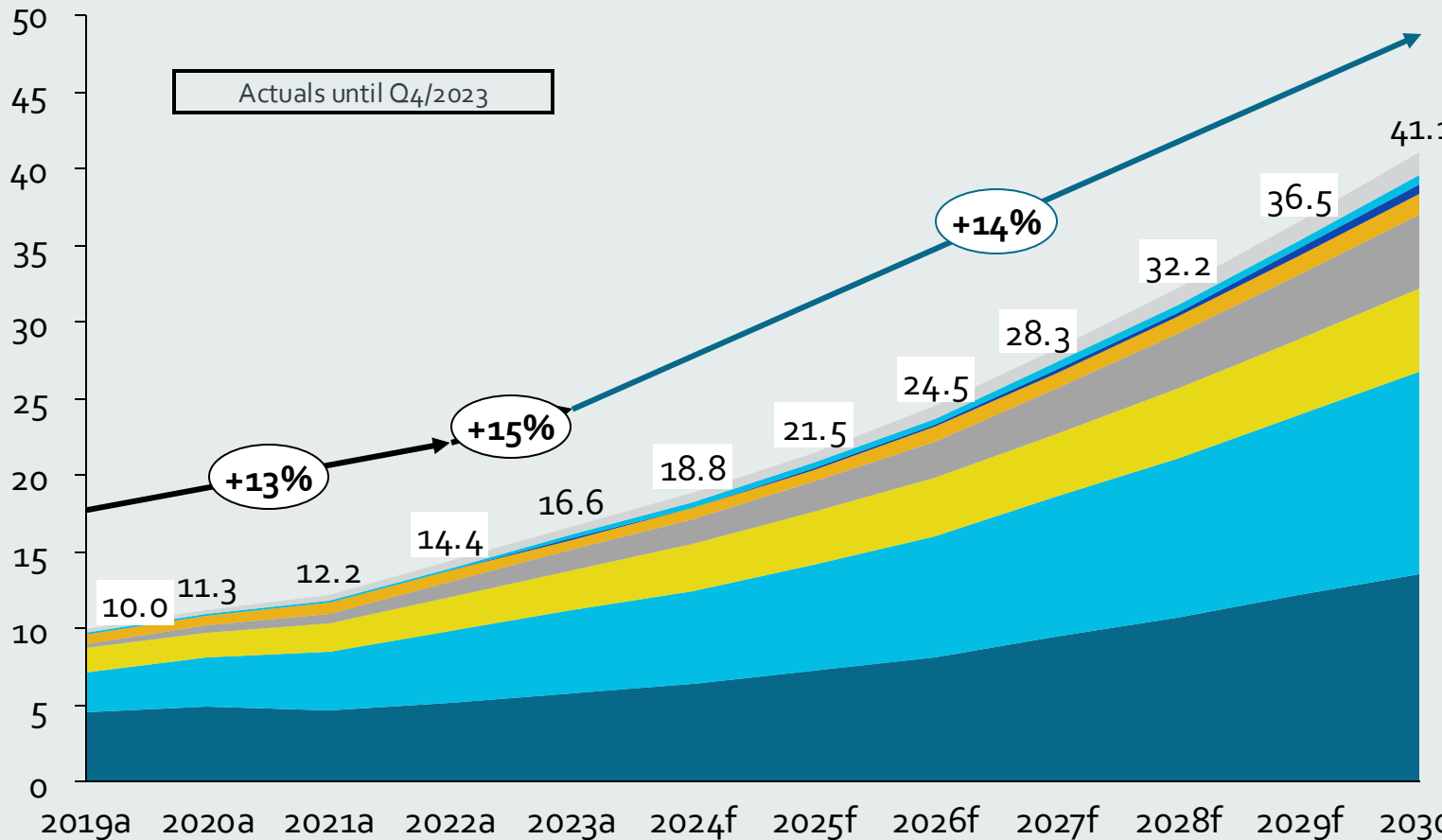
✉ [Satyajit.Sinha@iot-analytics.com](mailto:Satyajit.Sinha@iot-analytics.com)

Hamburg, Germany | [Website](#) | [LinkedIn](#)

# Global IoT market forecast: The world is getting ever more connected

Cellular IoT Connections reached 3.5 Billion, 21% of IoT Connection in 2023.

Number of global active IoT connections (installed base) in billions



Connectivity type	CAGR 21-23	CAGR 23-30
Other	21%	17%
Wireless neighborhood area networks (WNAN)	15%	14%
Cellular 5G IoT	147%	62%
Wired IoT	4%	9%
LPWA	35%	21%
Cellular IoT (excl. 5G, LPWA)	21%	11%
Wireless local area networks (WLAN)	18%	14%
Wireless personal area networks (WPAN)	12%	13%

XX% = CAGR

**Note:** IoT connections do not include any computers, laptops, fixed phones, cellphones, or consumers tablets. Counted are active nodes/devices or gateways that concentrate the end-sensors, not every sensor/actuator. Simple one-directional communications technology not considered (e.g., RFID, NFC). Wired includes ethernet and fieldbuses (e.g., connected industrial PLCs or I/O modules); Cellular includes 2G, 3G, 4G, 5G; LPWA includes unlicensed and licensed low-power networks; WPAN includes Bluetooth, Zigbee, Z-Wave or similar; WLAN includes Wi-Fi and related protocols; WNAN includes non-short-range mesh, such as Wi-SUN; Other includes satellite and unclassified proprietary networks with any range.

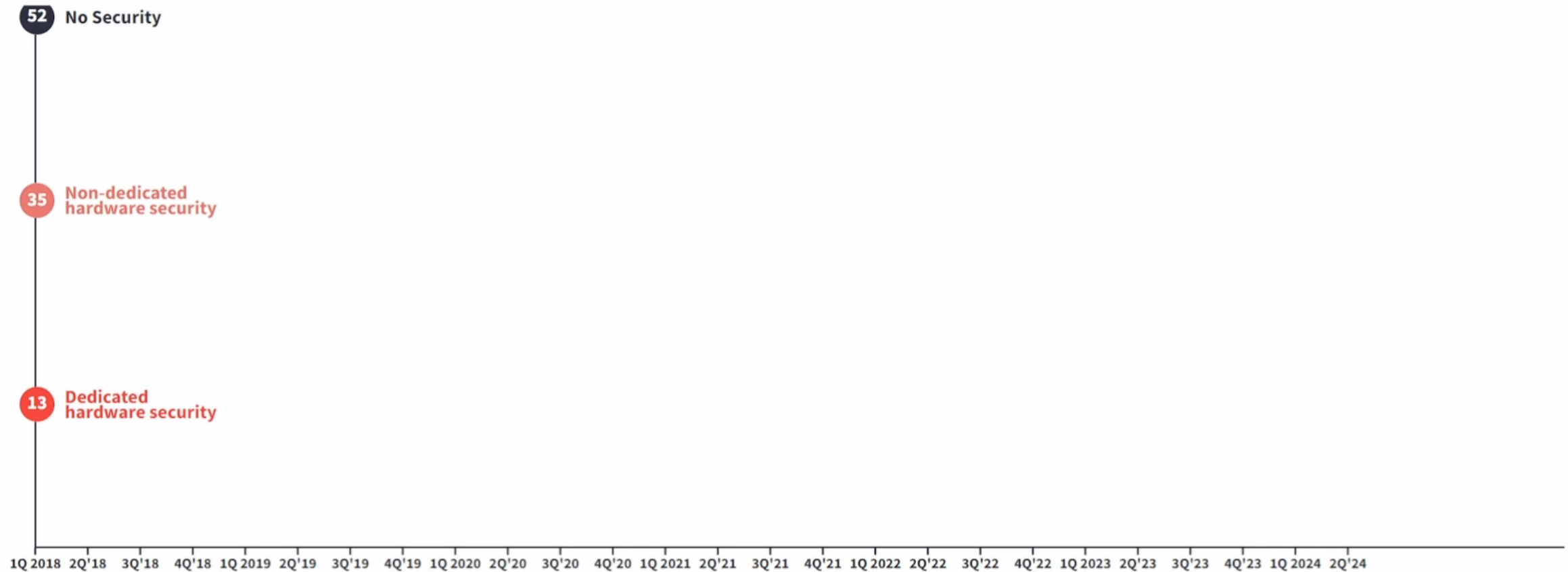
**Source:** IoT Analytics Research 2024-State of IoT Summer 2024. We welcome resharing. Please attribute this image to its original source and include a link back to the original article.





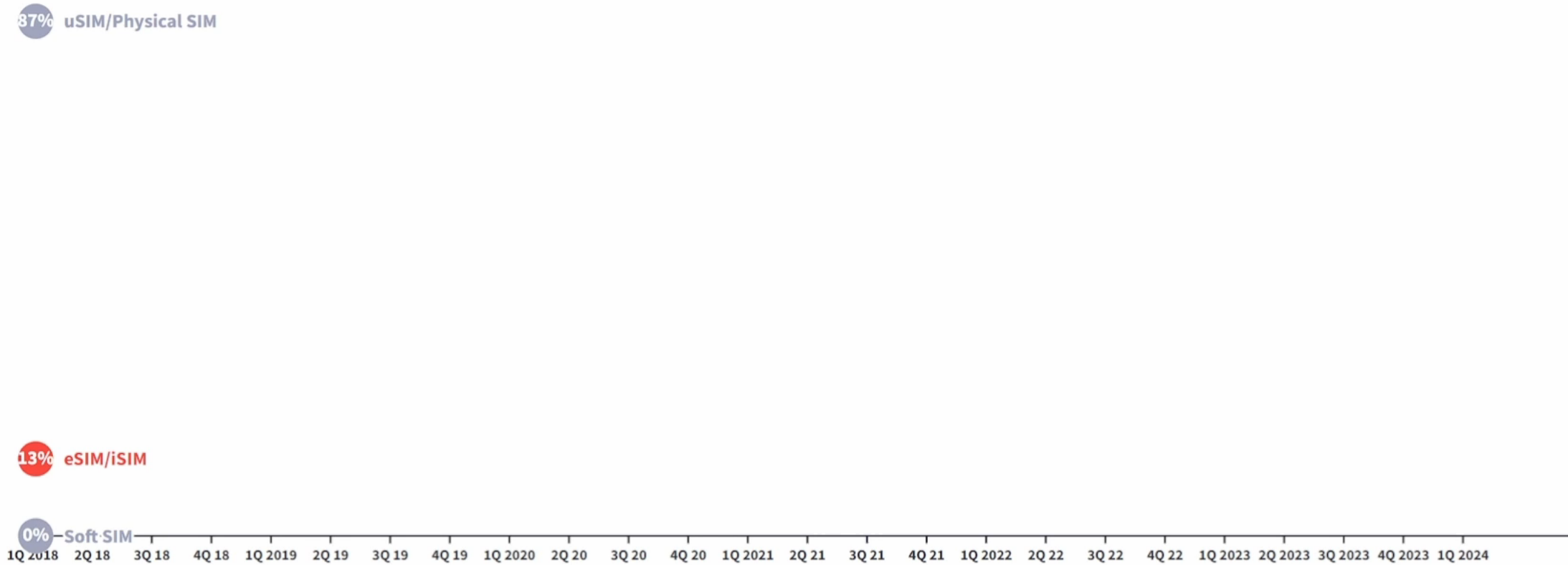
# Cellular IoT modules 2018-2024: The rise of hardware security

Cellular IoT module market share by security type (based on shipments in %)



# The rise of eSIMs

Cellular IoT module market share by SIM type (based on shipments in %)







# Kigen: Driving (integrated) eSIM to be the cornerstone of IoT

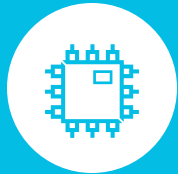


**Kaleido Intelligence**

**High Flyer:** eSIM Subscription Management



Global eSIM enablement leader



## INTEGRATED eUICC

Solutions for the semiconductor and device ecosystems.



## OEM FOCUSED

In-factory connectivity enablement.



## eSIM SOLUTIONS

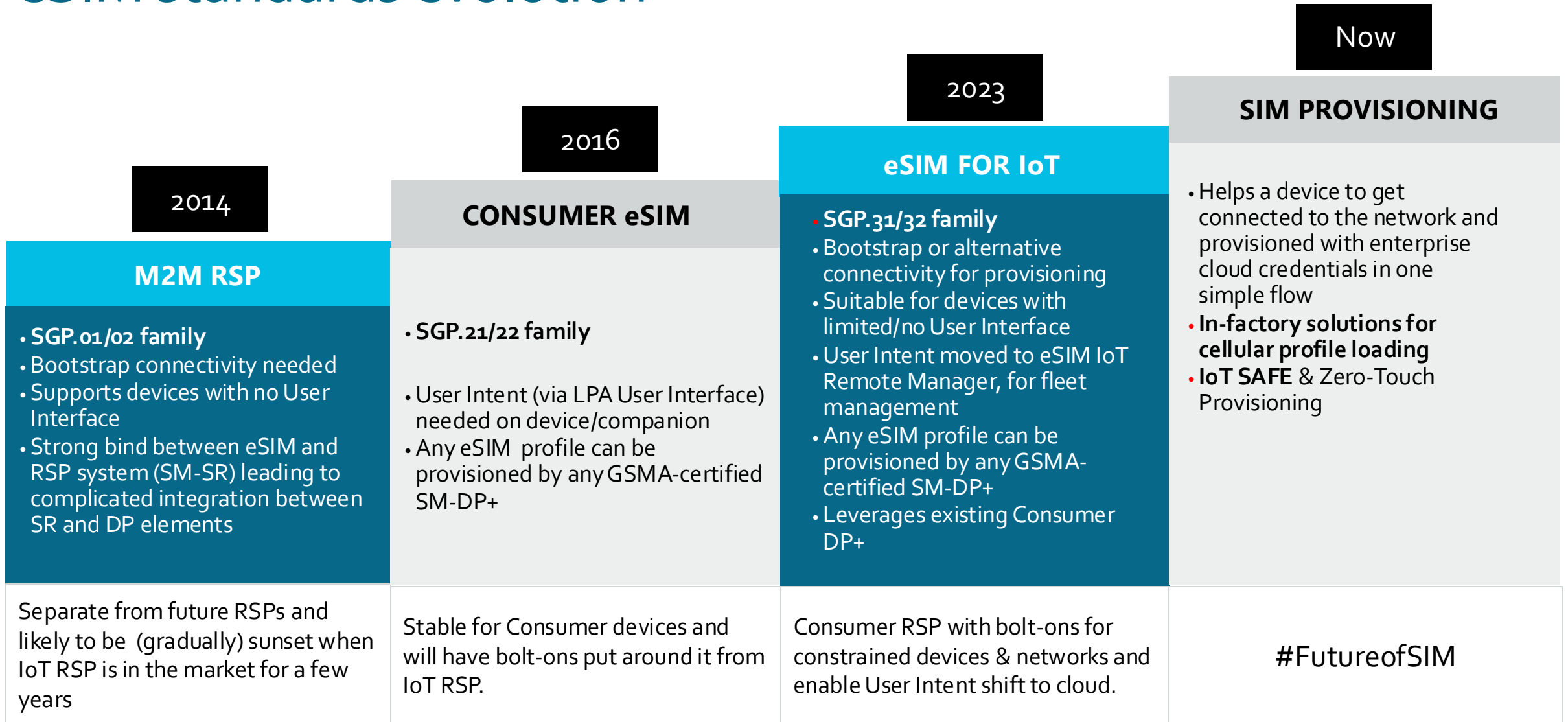
In-Field Connectivity Management.



## IoT SAFE

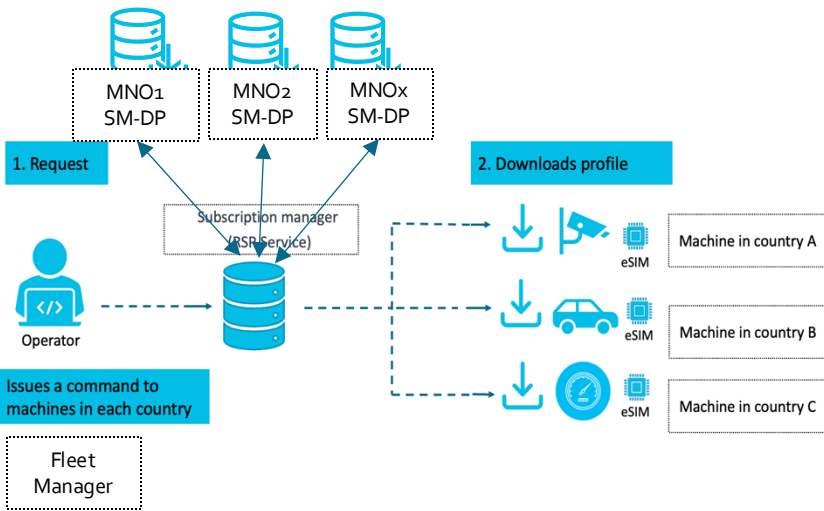
Securing Data and Transactions with Zero Touch Provisioning.

# eSIM standards evolution



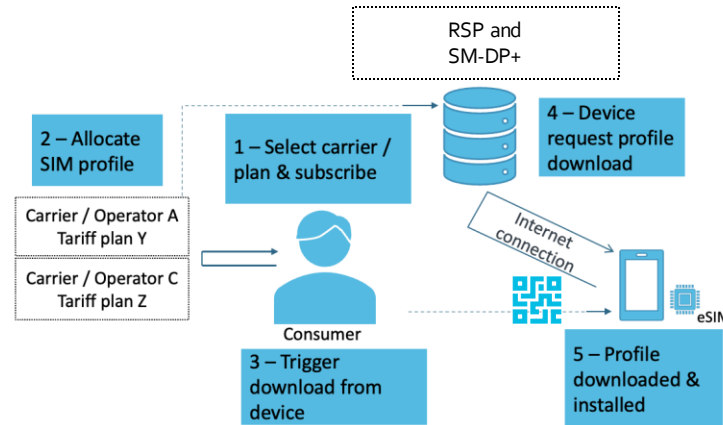
# eSIM and SGP.32: GSMA standards

## M2M eSIM - SGP.02



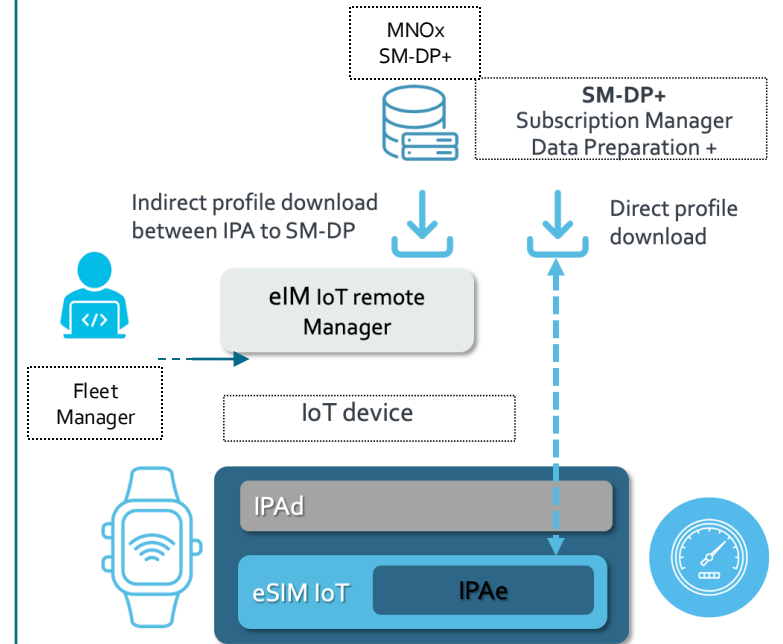
Complex integrations for profile, not suitable for constrained devices on LPWAN networks (CAT-M, NB-IoT)

## Consumer eSIM - SGP.22



Not suitable for IoT. Requires screen or camera type capabilities on devices, and triggered by user intervention

## (New) IoT eSIM - SGP.32



Brings simplicity of Consumer eSIM without complex integration requirements of M2M eSIM and suitable for managed RSP in field



# Kigen: investing in security

- Kigen has a fully autonomous data center in Dublin, Ireland
- GSMA SAS-UP (profile generation) and SAS-SM (RSP profile download)



Certificate No: KN-BT-UP-0924

## Certificate

This is to certify that

**Kigen (UK) Limited, Belfast, United Kingdom**

has participated in the GSM Association Security Accreditation Scheme for UICC Production (SAS-UP) and satisfied the scheme's requirements.

This certificate remains valid until the end of September 2024\*.



Alex Sinclair  
Chief Technology Officer  
GSMA



\* Dependent on continued supporting site certification (currently valid to end September 2024)



Certificate No: KN-DN-SM-0625

## Certificate

This is to certify that

**Kigen (UK) Limited, Dublin, Republic of Ireland**

has participated in the GSM Association Security Accreditation Scheme for Subscription Management (SAS-SM) and satisfied the scheme's certification requirements.

This certificate remains valid until the end of June 2025.



Alex Sinclair  
Chief Technology Officer  
GSMA



\* Dependent on continued supporting site certification (currently valid to end June 2025)

# Kigen Generates Connectivity Profiles for each MNO

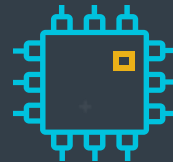
Profiles



Triple cut or 2FF/3FF/4FF  
Power saving features



Embedded MFF2 or USON-8-6 (2x2 mm)  
Power saving features



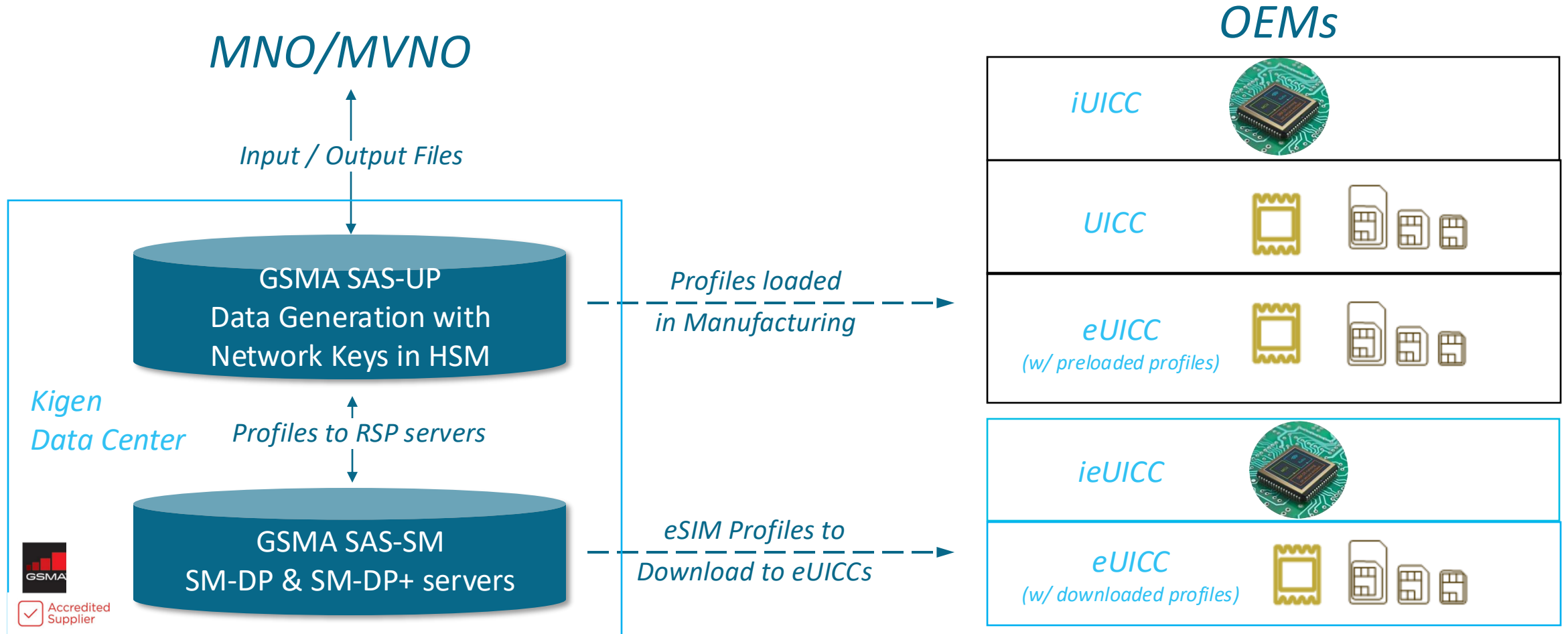
Secure digital Profiles

Integrated in SSI Alt1250/1255/1350 or  
Sequans Monarch2/Calliope 2

Preloaded or RSP operational profiles

# Kigen Data Center Securely Generates Encrypted Packages

*Fabless with all GSMA SAS processes*







1NCE

# IoT **software** and **connectivity** for life

1NCE has created a **platform** to build and manage connected products.

The **platform** provides software tools and global connectivity.

The platform is designed to enable customers to manage the data flow from device to cloud across the entire lifetime of the connected product.




# Establishing a new standard for IoT

## Fast

 20,000+ customers won  
in 6 years

 400+ team  
across Europe,  
Asia and US

 22+ million  
managed endpoints

 +300% year on year growth

Fastest growing IoT Service Provider\*

*"1NCE launched its flat rate life-time connectivity offering for connected devices in 2018 and has achieved unparalleled growth in the past two years."*

*Johan Fagerberg, CEO, Berg Insight*

## Strong

- Global access under a strong a family of local network operators

- Europe  Deutsche Telekom AG
- USA  T-Mobile US
- Asia  SoftBank
- China  中国电信  
CHINA TELECOM
- Further partners tba

## Everywhere

- Can be used for nearly all IoT applications



Smart  
Agriculture



Waste  
Management



Industrial  
Automation



Fleet  
Telematics



Smart City



Tracking



AR / VR



Smart Buildings



Infrastructure  
monitoring



Smart Metering



Remote  
Monitoring



Tracking  
Devices

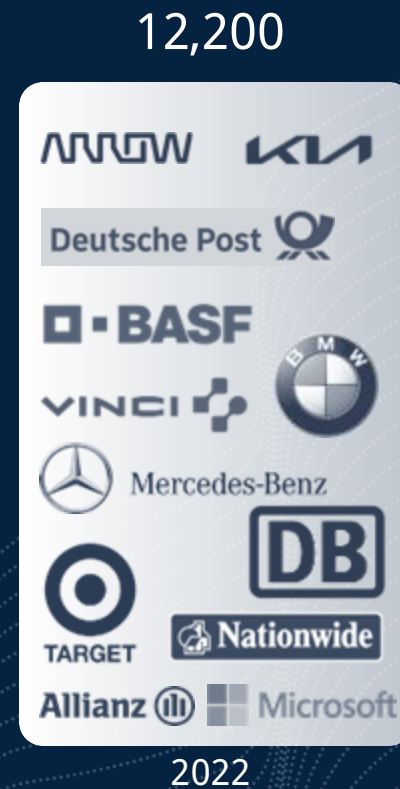
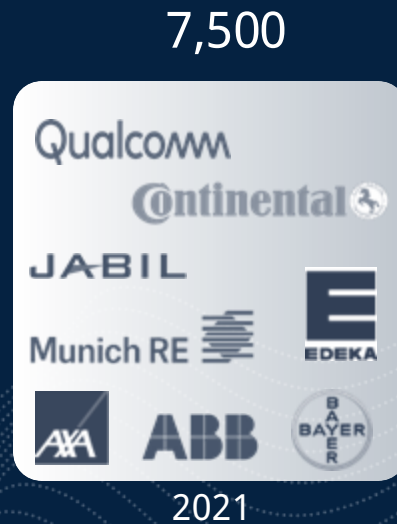
*"1NCE has proven to deliver IoT Connectivity that meets our high expectations in terms of flexibility, reliability and worldwide coverage."*

*Alberto Falcione, Vice President Sales, Targa Telematics*

# Serving 12% of Global Fortune 500 companies

## Customer base

(# of customer cumulative in k)





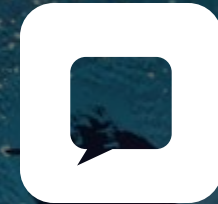
# Over to you for questions



@Kigen



@Kigen\_Ltd



Use the chat panel  
for questions

<https://kigen.com/contact/>